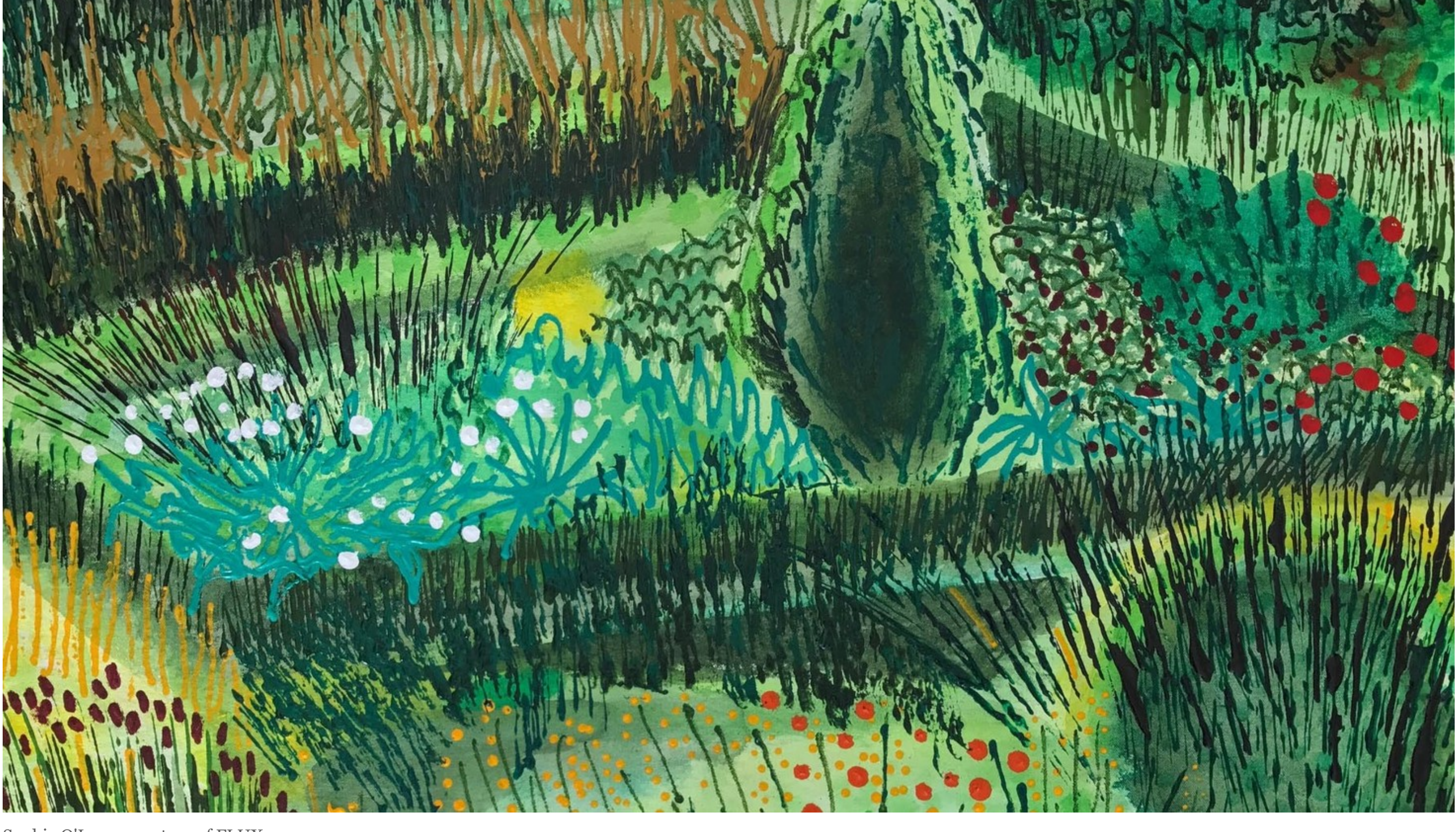


# Flux

11 — 15 Apr 2018 at the Chelsea College of Arts in London, United Kingdom

17 MARCH 2018



Sophie O'Leary courtesy of FLUX

FLUX is London's leading, contemporary art exhibition to discover the most talented, dynamic painters, sculptors and performance artists.

FLUX has established itself as the platform for contemporary artists to be discovered and to be part of an exceptional, inspirational art event. Hosted by Chelsea College of Arts in London and curated by Lisa Gray, the founder of FLUX, this fifth, much anticipated edition brings 100 artists to the fore. Gray has hand selected the very best emerging and established artists for a five-day event.

FLUX opening party comes alive with musical guests, performance art and site specific installations which complement the work and bring a new experimental approach to the exhibition.

The show represents an opportunity to gain access to a vast and diverse group of gifted artists, on the path to being the big names of tomorrow, showcasing international talent in a collaborative, inclusive show. FLUX celebrates artists on the precipice of wider accolade and fame.

The exhibition will also be featuring the unique, Mini-Masterpieces where smaller artworks by FLUX artists can be purchased for £300 or less. A great way for a new collector to invest in art at a fraction of the price of artists' normal sized works.

To celebrate this fifth and most ambitious edition FLUX will be giving away a limited edition artwork by Marcus Jake worth over £300 to all purchasers.

**Sophie O'Leary** is a landscape artist. Her distinctly abstract visual style captures the intangible spirit of a place, with an intensely vivid use of colour and inventive mark-making. She is inspired by the great Kandinsky, Peter Doig, David Hockney and the Fauvist movement, and also the ideas of the early abstract Theosophical artists. With a BA in Anthropology, she studied at fine art Morley College, is currently on the Turps Art School mentoring programme and works from her studio in South West London. Her work is in several private collections and is published as a vinyl cover artist.

**D.E. Aderhold** walks a fine line between figurative and abstract painting, between artistic intentionality, experimental openness and chance. The pre-representational, emotional quality of the colour is fundamental to the mood of the image. Dynamism is a product of dissonance, and is —whether in the clash of acid green and crimson or in the visual clamour of hectic mark-making against a tranquil stain. These kinds of dissonances are found throughout Aderhold's work and they bring to the fore a visual representation of his search for order in a seemingly disorderly world. Through his work, Aderhold attempts to bring together those aspects of human experience which might seem irreconcilable. Cacophony and silence, chaos and order, gentleness and ferocity.

**Helen Dyne** is a mixed media glass artist and has been working with glass for over 18 years. She is self taught and enjoys the freedom of exploration with no boundaries. She combines her love of nature with her fascination of found objects especially vintage clocks, copper pipe, and old tools. She creates almost 3D illusions in some of her work by painting on many glass layers then fusing the final piece into one solid piece of glass.

She is working on a series of work that explores all that is around us, inspiration coming in many forms, but much is inspiration drawn from the beautiful countryside where she takes many seasonal walks with her camera. This years body of work explores ...."Mother Earth" the living and the decaying. Her Mother Earth series is a mix of sculptural work, 3D paintings and glass enamel paintings. Using a mix of sheet glass and glass powders and frit, mixed with copper and solder pipe work. After a successful year she is exploring the boundaries of glass by extending her living range of flowers and the deep ocean, Helen has also been researching and teaching herself the glass casting lost wax technique. Bringing in more colour this year by using soft pastel shades. Each piece is first fused in the kiln then slumped to melt the glass in many directions bringing movement and fluidity to a lot of her sculptural pieces.

**Marc Standing** was born and raised in Zimbabwe, before immigrating to Australia in his late twenties. After acquiring Australian citizenship he spent the last seven years in Hong Kong. He is currently based in London. Standing obtained his BAFA honors degree from the University of Cape Town in South Africa with distinctions in painting.

Standing has taken part in numerous group and solo exhibitions internationally and is represented by Art Labor in Shanghai and King Street Gallery in Sydney. He has also been a finalist in many art prizes over the years, including the Sovereign Asian Art Prize, which culminated in coordinating workshops in Cambodia with children who have suffered through trauma. His work is included in The Groucho Club collection in London, Artbank in Australia, as well as, a number of private collections. He has been the occurring artist in residence at Amilla Fushi in the Maldives, and has taken part in residencies in Mexico, The Philippines and Shanghai.

Standing's paintings are predominately acrylic on canvas. The works evolve in an organic and spontaneous manner in which the painting dictates it's own evolution. Many printing techniques are incorporated into the work. Texture and layering are an integral element to the progression of each painting. His inspiration is derived from our biology, science, and the natural world where the push and pull of what we see and what is hidden becomes apparent, as the works begins to reveal its own truth.

51 Shares

Email

Share

Tweet

Share

Pin



## Chelsea College of Arts

A vibrant world centre for art, design, fashion, communication and performing arts.

Place profile

Location  
London, United Kingdom

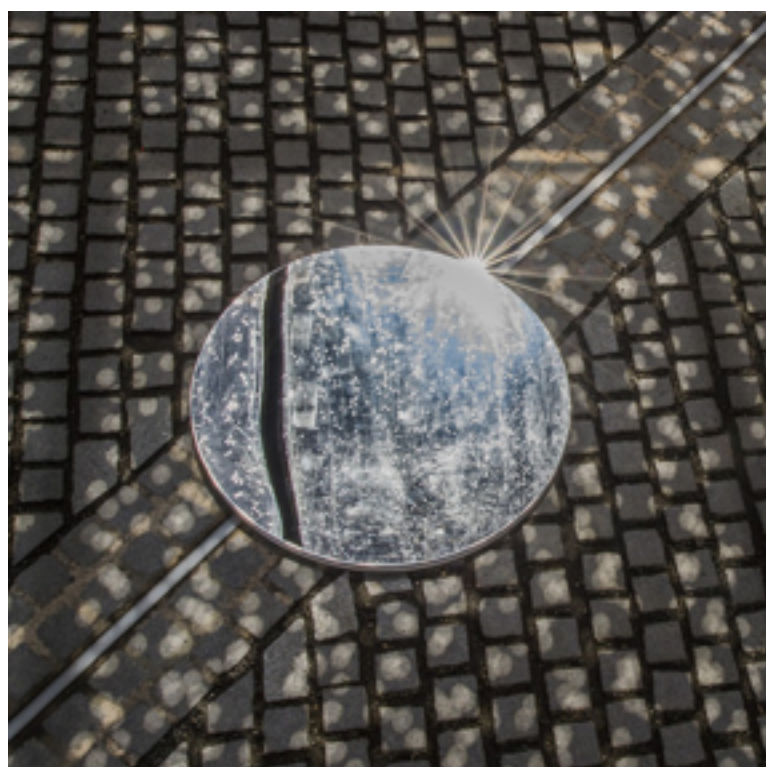


1. Detlef Aderhold Courtesy of FLUX
2. Helen Dyne Courtesy of FLUX
3. Marc Standing Courtesy of FLUX

## MORE FROM CHELSEA COLLEGE OF ARTS

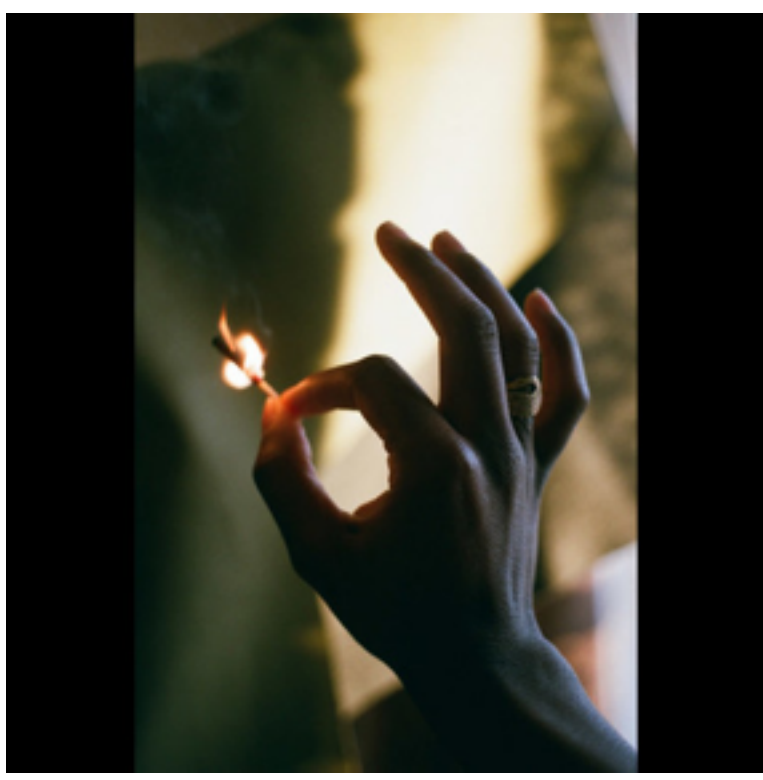


Flux  
12 — 16 Jul 2017



Cosmic Latte Lullaby  
12 — 15 Jul 2017

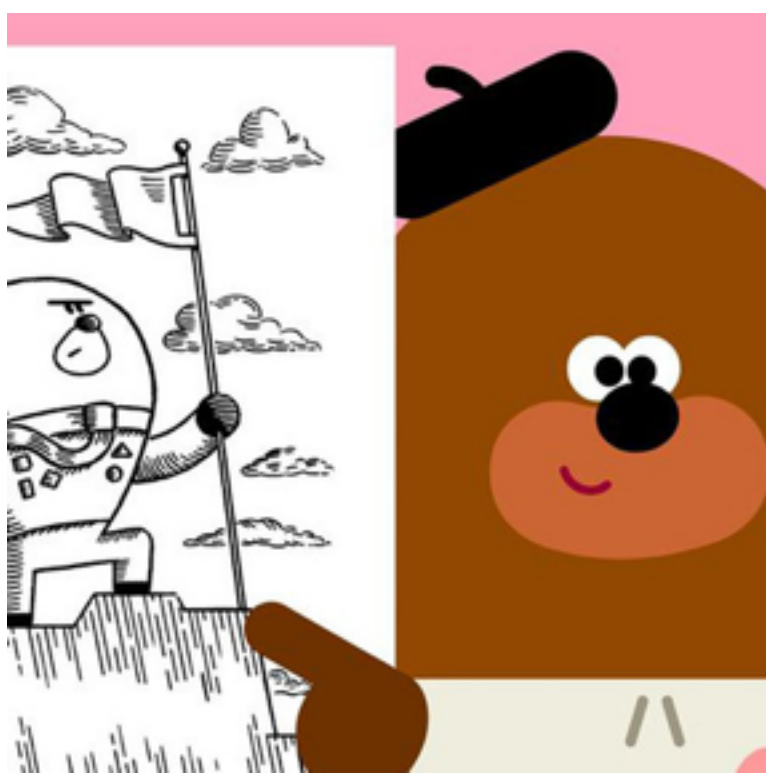
## MORE IN LONDON, UNITED KINGDOM



Artquest  
24 Oct — 30 Apr 2019 at Camden Arts Centre



Naomi Frears  
24 Oct — 30 Nov 2019 at Beaux Arts

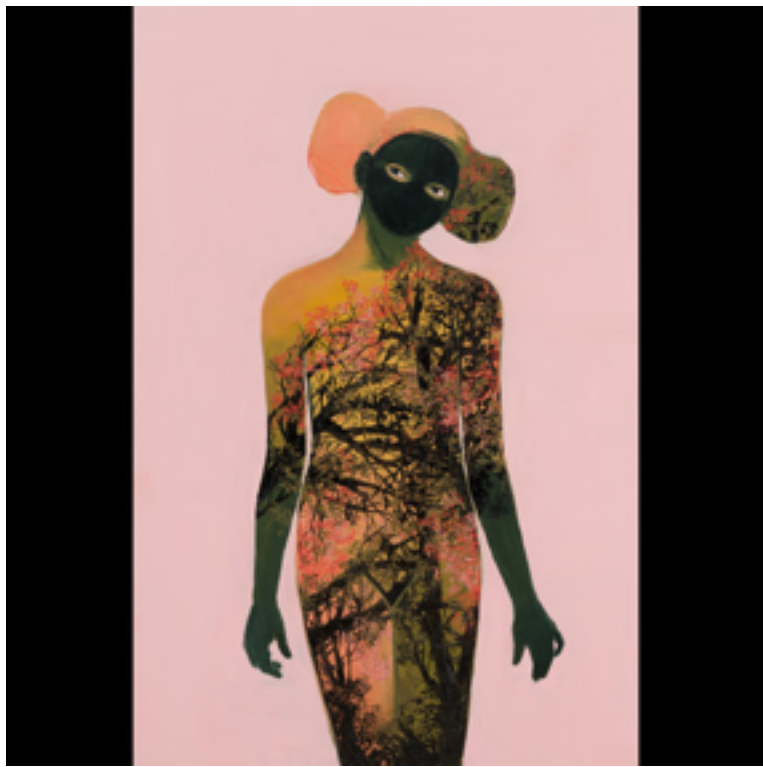


ARCHITECTURE & DESIGN  
Designing Hey Duggee  
25 — 28 Oct 2019 at Design Museum



George Finlay Ramsay  
27 Oct — 30 Nov 2019 at SET

## MORE IN UNITED KINGDOM



Infinite Forest  
29 Oct — 6 Nov 2019 at Pi Networks in London



Kate Daudy. Cyril de Commarque  
2 Nov 2019 — 1 Mar 2020 at Saatchi Gallery in London



Adjani Opku-Egbe  
7 Nov — 26 Dec 2019 at Sulger-Buel Lovell in London



CULTURE  
Women Power Protest  
10 Nov — 31 Mar 2019 at Birmingham Museum and Art Gallery in Birmingham

## Subscribe

Get updates on the Wall Street International Magazine

Email address

Subscribe